

**Mouse Monoclonal Antibody to ESRRA**  
**Purified Mouse Monoclonal Antibody**  
**Catalog # AO2421a****Specification**

---

**Mouse Monoclonal Antibody to ESRRA - Product Information**

Application	WB, FC, E
Primary Accession	<a href="#">P11474</a>
Reactivity	Human, Rat
Host	Mouse
Clonality	Monoclonal
Isotype	Mouse IgG1
Calculated MW	45.5kDa KDa

**Description**

The protein encoded by this gene is a nuclear receptor that is closely related to the estrogen receptor. This protein acts as a site-specific transcription regulator and has been also shown to interact with estrogen and the transcription factor TFIIB by direct protein-protein contact. The binding and regulatory activities of this protein have been demonstrated in the regulation of a variety of genes including lactoferrin, osteopontin, medium-chain acyl coenzyme A dehydrogenase (MCAD) and thyroid hormone receptor genes. A processed pseudogene of ESRRA is located on chromosome 13q12.1. Alternatively spliced transcript variants have been found for this gene.;

**Immunogen**

Purified recombinant fragment of human ESRRA (AA: 198-376) expressed in E. Coli.

**Formulation**

Purified antibody in PBS with 0.05% sodium azide

**Application Note**

ELISA: 1/10000; WB: 1/500 - 1/2000; FCM: 1/200 - 1/400

**Mouse Monoclonal Antibody to ESRRA - Additional Information**

**Gene ID** 2101

**Other Names**

ERR1; ERRa; ESRL1; NR3B1; ERRalpha

**Dilution**

WB~~1:1000  
FC~~1:10~50  
E~~N/A

**Storage**

Maintain refrigerated at 2-8°C for up to 6 months. For long term storage store at -20°C in small aliquots to prevent freeze-thaw cycles.

**Precautions**

Mouse Monoclonal Antibody to ESRRA is for research use only and not for use in diagnostic or

therapeutic procedures.

## Mouse Monoclonal Antibody to ESRRA - Protein Information

**Name** ESRRA

**Synonyms** ERR1, ESRL1, NR3B1

### Function

Binds to an ERR-alpha response element (ERRE) containing a single consensus half-site, 5'-TNAAGGTCA-3'. Can bind to the medium- chain acyl coenzyme A dehydrogenase (MCAD) response element NRRE-1 and may act as an important regulator of MCAD promoter. Binds to the C1 region of the lactoferrin gene promoter. Requires dimerization and the coactivator, PGC-1A, for full activity. The ERRalpha/PGC1alpha complex is a regulator of energy metabolism. Induces the expression of PERM1 in the skeletal muscle.

### Cellular Location

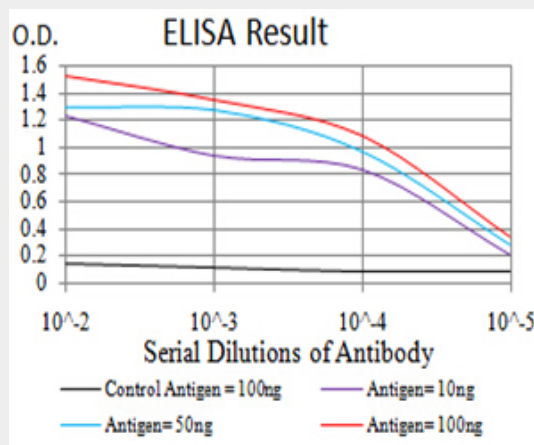
Nucleus {ECO:0000255|PROSITE-ProRule:PRU00407, ECO:0000269|PubMed:18063693, ECO:0000269|PubMed:21190936}. Cytoplasm. Note=Co-localizes to the cytoplasm only in presence of MAPK15.

## Mouse Monoclonal Antibody to ESRRA - Protocols

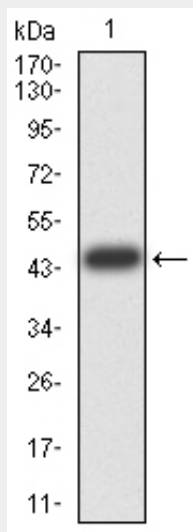
Provided below are standard protocols that you may find useful for product applications.

- [Western Blot](#)
- [Blocking Peptides](#)
- [Dot Blot](#)
- [Immunohistochemistry](#)
- [Immunofluorescence](#)
- [Immunoprecipitation](#)
- [Flow Cytometry](#)
- [Cell Culture](#)

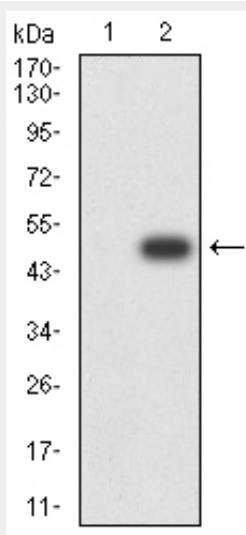
## Mouse Monoclonal Antibody to ESRRA - Images



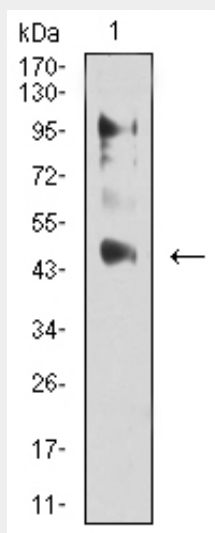
Black line: Control Antigen (100 ng);Purple line: Antigen (10ng); Blue line: Antigen (50 ng); Red line:Antigen (100 ng)



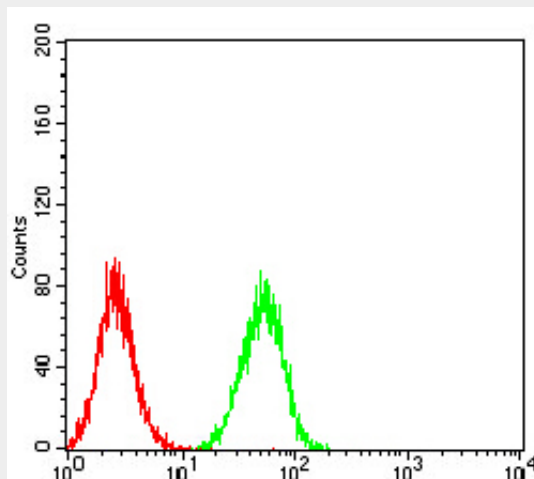
Western blot analysis using ESRRA mAb against human ESRRA (AA: 198-376) recombinant protein. (Expected MW is 45.3 kDa)



Western blot analysis using ESRRA mAb against HEK293 (1) and ESRRA (AA: 198-376)-hIgGFc transfected HEK293 (2) cell lysate.



Western blot analysis using ESRRRA mouse mAb against C6 (1) cell lysate.



Flow cytometric analysis of Hela cells using ESRRRA mouse mAb (green) and negative control (red).

#### **Mouse Monoclonal Antibody to ESRRRA - References**

1.J Huazhong Univ Sci Technolog Med Sci. 2014 Dec;34(6):875-81. ; 2.Mol Ther. 2014 Apr;22(4):743-51. ;